



Leading a Governance Revolution

The Caste Survey Saga

Sandeep Kumar Sultania, IAS.,
Principal Finance Secretary, Telangana.



జడ్చర్ల సభలో కులగణనపై రాహుల్ గాంధీ గారి ప్రసంగం

Shri. Rahul Gandhi's speech at Jadcharla
on Telangana Socio-Economic Caste Survey



**Hon'ble Chief Minister Shri A. Revanth Reddy Garu, while passing a resolution in the
Legislative Assembly on February 16, 2024.**

The Impossible Beginning

- **The Mountain**

We were handed a task of census-like proportions: conduct a comprehensive survey in just **30 days**.

- **The Void**

We started with **nothing**—no personnel, no ready-made format, and no previous experience to lean on.

- **The Clock**

A general census takes six months and has its own army; we had only one month and a mandate.

- **The Managerial Spark**

We didn't panic; we used "**backward calculation**" to turn a deadline into a detailed Plan Of Action.

The Mandate – More Than Just a Survey

The Vision

Leadership by Hon'ble Chief Minister Shri Revanth Reddy driving a comprehensive door-to-door survey
Legislative Assembly resolution dated February 16, 2024, emphasizing grassroots data collection.

The Mission

Focused on the advancement of Backward Classes (BC), Scheduled Castes (SC), Scheduled Tribes (ST), and other weaker sections
Aims to create targeted, inclusive development plans based on survey findings.

Legal Backbone

Supported by G.O.Ms.No.18 issued on October 10, 2024
Planning Department designated as the Nodal Department to ensure coordinated implementation.

Core Objective

Achieve equitable growth through data-driven governance
Utilize accurate, ground-level data to inform policy and resource allocation decisions.

Government Order (GO Ms.No.18, Dated 10.10.2024)

GOVERNMENT OF TELANGANA ABSTRACT

Planning department – Taking up a comprehensive door-to-door household survey (Socio, Educational, Economic, Employment, Political and Caste Survey) of entire Telangana State – Telangana Legislative Assembly Resolution – Orders Issued.

PLANNING (V) DEPARTMENT

G.O.Ms.No.18

Dated:10.10.2024

Read the following:

1. U.O. Note No.23/2024, dt.04.02.2024 of General Administration (Cabinet) Department.
2. U.O. Note No.1783/Genl, L&C/2024, dt.20.02.2024 along with the letter of Secretary to State Legislature, D.O.Lr.No.61/Legn/2024-2, dt.17.02.2024.

* * *

ORDER

Telangana Legislative Assembly has passed resolution as follows, vide reference 2nd read above.

2. "That the house resolves to take up a comprehensive door to door household survey (Socio, Economic, Educational, Employment, Political, and Caste survey) of entire Telangana State as per the decisions of Council of Ministers on 4th February, 2024 so as to plan and implement various Socio, Economic, Educational, Employment and Political opportunities for the amelioration of Backward Classes, SC and ST citizens of the state and other weaker sections of the state".

3. Government after careful consideration, hereby order to take up a comprehensive door to door household survey (Socio, Economic, Educational, Employment, Political, and Caste survey) of entire Telangana so as to plan and implement various Socio, Economic, Educational, Employment and Political opportunities for the amelioration of Backward Classes, SC and ST citizens of the state and other weaker sections of the state.

4. Planning Department is designated as the Nodal Department for conducting the survey. The survey shall be completed within a period of (60) days.

5. Planning Department shall take further necessary action.

(BY ORDER AND IN THE NAME OF THE GOVERNOR OF TELANGANA)

SANTHI KUMARI
CHIEF SECRETARY TO GOVERNMENT

To
The Prl. Secretary to Government, Planning Department.

Copy to:

The Prl. Secretary to Hon'ble Chief Minister.
PS to Hon'ble Dy. Chief Minister.
PS to all the Ministers in the State.
PS to Chief Secretary to Government.
All Special Chief Secretaries/ Prl. Secretaries/ Secretaries to Govt.
All the District Collectors in the State.
SF.

//FORWARDED BY ORDER//


SECTION OFFICER

Building the "Soul" – The Survey Form

Just not a Count

We didn't just want a count; we wanted a mirror of the citizens' lives across **Social, Economic, Educational, Employment, Political, and Caste** realities.

The Brainstorm

Our core team worked late into the night, engaging with census experts, NGOs, and political parties to ensure every voice was heard.




The Precision

We studied existing formats from other states like **Karnataka, Bihar**, found their flaws, and discarded them to build something superior.

The Inclusion

We developed **57 questions** and **75 fields**, including a "No Caste, No Religion" Developed **Instruction Manual** with codes to ensure flawless survey.

House Listing – Sticker



GOVERNMENT OF TELANGANA

**Socio, Economic, Education, Employment, Political
and Caste Survey**
(Comprehensive Door-to-Door Household Survey)

Name of the Village/
Municipality

Ward Number

Enumeration Block (EB) Number

Total No. Households in Enumeration Block (EB)

Households Sl. No. in
Enumeration Block (EB) /

House No.

Name of the
Head of the Household

Date of the Enumeration

PRAGATI PATHAM.. SAKALA JANAHITHAM.. MANA PRAJA PRABHUTHVAM



House Listing Form



GOVERNMENT OF TELANGANA

Socio-Economic, Education, Employment, Political and Caste Survey
(Comprehensive Door-to-Door Household Survey)

House-Listing

Enumeration Block Number							
Dist. Code		Mandal Code		EB Numer			

Total No. of Households

Name of the District:	
-----------------------	--

Mandal Name	
-------------	--

Household Sl. No.	Name of the Grampanchayat / Municipality	Ward No.	House No.	Name of the Head of the Household
(1)	(2)	(3)	(4)	(5)
1				
2				
3				
4				
5				



Household Survey Schedule Form (8 Pages)



GOVERNMENT OF TELANGANA
Socio, Economic, Education, Employment, Political and Caste Survey
(Comprehensive Door-to-Door Household Survey)
Household Schedule



Enumeration Block Number							
Dist. Code		Mandal Code		EB Numer			

House Hold Sl. No.		

Name of the District:		Code:	
Name of the Mandal:		Code:	
Name of the Grampanchayat/Municipality:		Code:	
Name of the Habitation:		Code:	
Ward No.		H.No.	
		Street:	



Guidelines for Enumerators (47-page Booklet)



Government of Telangana

**Socio, Economic, Educational,
Employment, Political and Caste Survey**
(Comprehensive Door to Door Household Survey)

INSTRUCTION MANUAL FOR ENUMERATORS

PLANNING DEPARTMENT

i | Page

Mapping the Unseen

- **The Obsolete World**

The 2011 census maps were ghosts of the past; cities had grown and people had moved.

- **The New Frontier**

In just 15 days, we created **94,000 new Enumeration Blocks (EBs)** from scratch.

- **The Detail**

Whether it was a high-rise apartment or a remote tribal hamlet, we ensured every 150 families were mapped as a single point of truth.

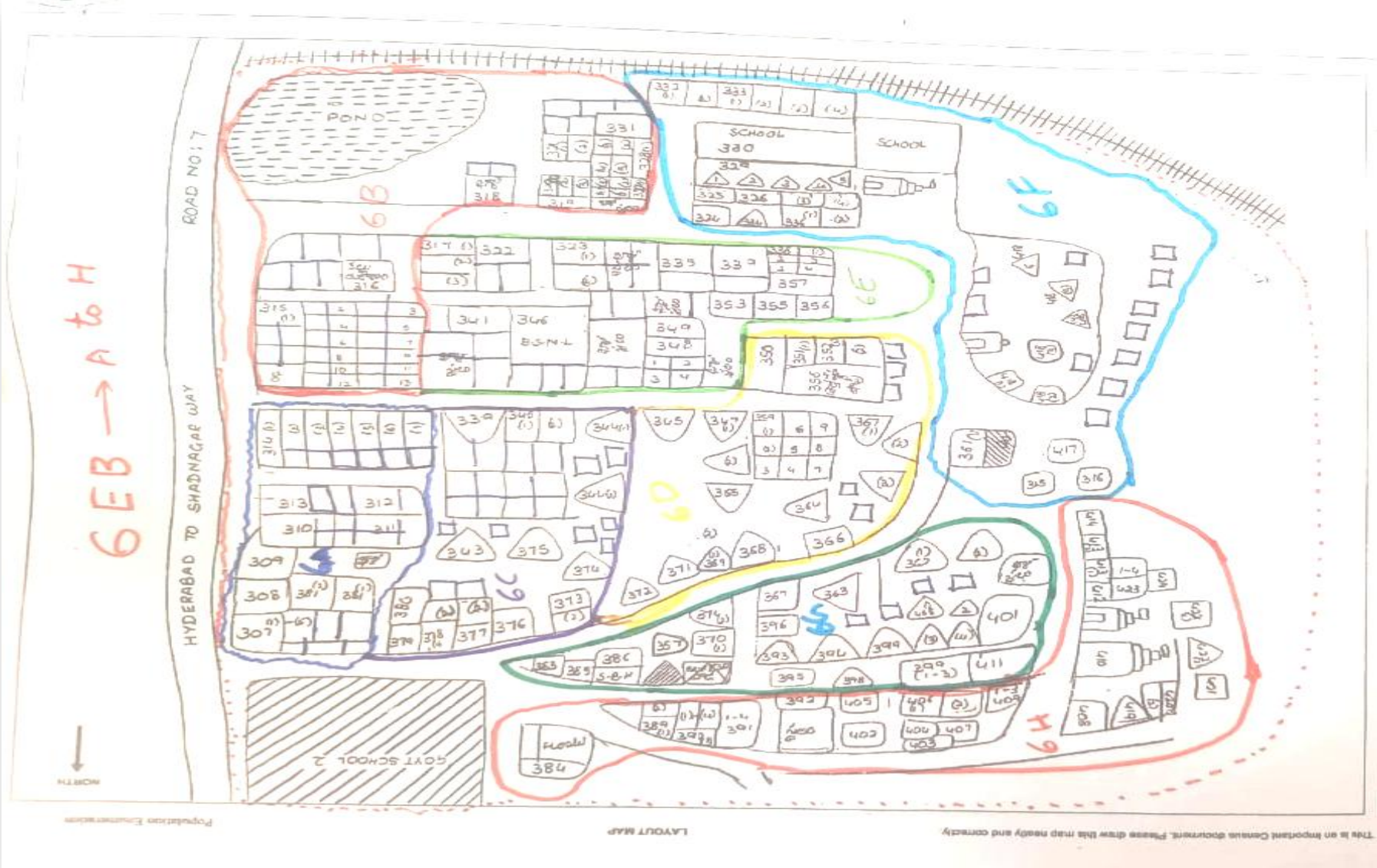
- **The Logistics**

One Enumerator for every block and one Supervisor for every ten—a human chain reaching every corner of the state.

Model Enumeration Blocks



Detailed Enumeration Blocks



The Battle Test (The Pilot)

The Reality Check

We didn't assume success; we tested our forms in the harshest environments—urban, semi-urban, rural, and tribal.

The Fix

We found that the space for answers was too small and questions were unclear. We didn't hide these flaws; we **refined them instantly**.

The Decentralization

To save every second, we decentralized the printing of the final forms to the districts.

The Field Army (One Lakh Hearts)

The Army of Peace:

We decided only government employees would collect this data. But how do you mobilize 100,000 people?.

The Noble Cause:

The Hon'ble Deputy CM met with teacher unions personally, inspiring them to join this mission "wholeheartedly".

The Sacrifice:

The government changed school timings to 2 PM, allowing teachers to serve the state in their post-teaching hours.

The Unity:

Agriculture officers and Anganwadi workers and other government officials were involved in the task.

The Foundation (House Listing)

The Essential Step

Some suggested skipping it, but we knew better. Without a solid list, the survey would crumble.

The 72-Hour Sprint

Between November 6th and 8th, we identified every single household in the state.

The Result

This meticulous three-day exercise was the secret to the **seamless conduction** of the massive survey that followed.

Confronting the Storm – Challenges Tackled

Tracking the Unreachable

- Initially, 2.38 lakh houses were locked and inaccessible.
- Massive outreach efforts through millions of calls and community involvement reduced unreachable houses to approximately 1.03 lakh.

Crushing False Propaganda

- Misinformation campaigns aimed to discourage participation in the survey.
- Daily briefings by Cabinet Ministers and personal assurances from the Deputy CM reassured the public about data security and inclusion.

Legal Fortification

- Unlike other states where surveys faced legal obstacles, Telangana maintained 'complete legality'.
- Successfully defended Public Interest Litigation (PIL) challenges in the High Court, ensuring smooth progress of the survey.

Decentralization & Command – The Secret of Efficiency



Managerial Autonomy

- District Collectors were empowered with full resources and autonomy to address local challenges effectively.



Logical Speed

- Decentralization of form printing and supply procurement enabled districts to complete tasks promptly.



Continuous Monitoring

- High-level oversight through multiple video conferences by the Chief Minister, Deputy Chief Minister, and Chief Secretary ensured sustained progress and accountability.



Impact

- Combining autonomy with active monitoring created a responsive and efficient administrative system.



Hon'ble Deputy Chief Minister Video Conference with District Collectors at 7.30 AM from Ranchi during the Election Campaign in Jharkhand



Chief Secretary reviews the survey through a Video Conference with the District Collectors

The Digital Engine of Truth (The Software)

The Choosing of a Champion

We identified the **Centre for Good Governance (CGG)**, a Telangana Government organization, because they possessed the rare experience needed to handle data on this gargantuan scale.

Power That Scales

We didn't just build a program; we configured servers with **auto-scaling** technology, allowing the system to breathe and expand as it handled the crushing weight of high data loads.



The Wisdom of Experience

While we initially considered a mobile app, we saw how often such apps failed in real-world surveys; we chose **hard copies** for the field to ensure the mission never stalled due to a screen freeze.

A Massive Digital Fortress

CGG developed specialized data entry software that was relentlessly tested and refined to ensure **zero errors** before the first name was ever typed.

Cascading Wisdom (The Training)

The Waterfall Effect

How do you train
100,000 people
"within no time"?
You use a **three-
pronged strategy**.

The Spark at MCRHRD

Right here on this
campus, we lit the fire
by training 175 Master
Trainers (ToTs).

The Expansion

Those trainers went to
the districts, then the
mandals, creating a
wave of knowledge
that reached every
enumerator in the
field.



Principal Secretary for Planning and Finance, Shri Sandeep Kumar Sultania IAS provided guidance to the enumerators during the training program held at the MCRHRD Institute in Hyderabad.



Hyderabad Collector and State Nodal Officer, Shri Anudeep Durishetty IAS conducted a training session for enumerators at the MCRHRD Institute.



సామాజిక, ఆర్థిక, విద్య,
ఉపాధి, రాజకీయ మరియు కుల సర్వే
(సమగ్ర కంటిన్యూ కుటుంబ సర్వే)

భారతదేశం జిల్లా

District Level Training Programme for
Enumerators and Supervisors



District Level Training Programme for
Enumerators and Supervisors

The Error-free Data Entry

The "Fantastic Idea" – Enumerator and Data Entry Operator sit together

To ensure total accuracy, we mandated that the enumerator sit side-by-side with the data entry operator—a human-to-human verification that made the data beyond reproach.

Secure & Seamless

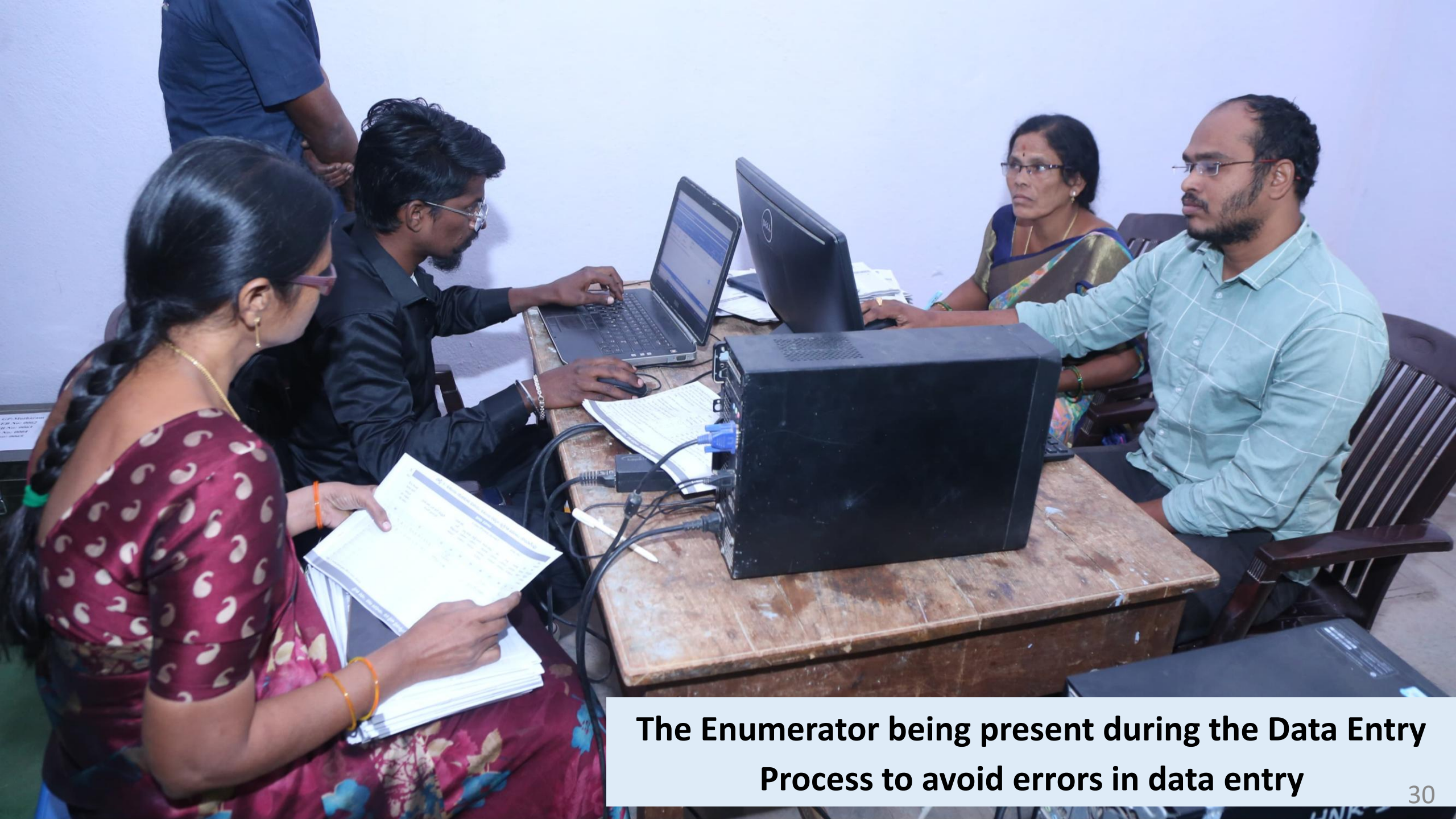
Every entry was guarded by **OTP-based security**, ensuring that the **80 crore data points** we captured were as secure as they were accurate.

A Unified Victory

Because of this meticulous planning, our first district—**Mulugu**—completed both the survey and the massive data entry within the stipulated 30-day window.



**The District Collector supervising the
Data Entry Process**



The Enumerator being present during the Data Entry Process to avoid errors in data entry

Household survey

The main survey began on 9th November 2024, with the collection of details from the First Citizen of the State and Hon'ble Governor of Telangana, marking the formal launch of the state-wide data collection process





The enumerator, along with other officials, collected survey details from Hon'ble Chief Minister Shri A. Revanth Reddy Garu



The enumerator, along with other officials, collected survey details from Hon'ble Dy. Chief Minister Shri Mallu Bhatti Vikramarka Garu.



The Enumerator and other officials collected survey details from Hon'ble Minister for Transport and Backward Classes Welfare, Shri Ponnamm Prabhakar Garu.



The Enumerator, along with officials, collected survey details from the Chief Secretary to the Government, Smt. A. Santi Kumari Garu.



Active Participation of people in the Survey across the State



Active Participation of people in the Survey across the State

SEEP Survey kickstarts in city, queries make households edgy

Hans India

ON THE FIRST DAY, MANY RESIDENTS REPORTED FEELING APPREHENSIVE UPON SEEING THE LENGTHY FORMS CONTAINING OVER 70 QUESTIONS

- 22,000 enumerators to take part
- Over 29 lakh houses to be surveyed
- Questions include caste, employment details, lands owned, loans taken, among others
- The survey has two parts with 75 questions - 56 main and 19 supplementary questions

HANS NEWS SERVICE HYDERABAD

THE State government with much fanfare has initiated the door-to-door survey to assess the Socio-Economic, Educational, Employment, Political, and Caste Survey (SEEP) of all households across the GHMC on Wednesday, with over 22,000 enumerators and supervisors for surveying over 29 lakh houses in Greater Hyderabad.

On Wednesday, it was observed that when enumerators approached homes in the afternoon, many residents felt apprehensive upon seeing the lengthy forms containing over 70 questions. Nevertheless, the surveys took the time to clarify the guidelines, easing the concerns of the residents.

On the very first day, all the heads of the families of households were ready with their Aadhaar, ration card and other documents to produce before the officer visiting the house. The surveyors along with the Socio Economic Survey forms visited a handful of houses and conducted surveys and affixed the sticker on the door of the households. During the survey, they interacted with the head of the family and recorded the information provided by the household.

"The survey is done in two parts with over 75 questions, with 56 main and 19 supplementary



Photos: Adula Krishna, G Ramesh

mentary questions. This includes personal details, family information, education, employment, assets, caste status, and more," said a surveyor in Shalibanda. The officer who wanted to remain anonymous said, "With such enquiries, the residents were anxious and were not responding. However with the help of local leaders we have cleared their doubts and explained to them about the guidelines and took up the survey."

To ensure inclusive and effective governance, the Telangana government has initiated a landmark State-wide survey in 2024 to understand

the diverse SEEP needs of its citizens. As part of this initiative, on Wednesday, Minister for Transport and BC Welfare, and in-charge Minister of Hyderabad district, Ponnampal Prabhakar, officially launched the programme in GHMC. Mayor Gadwal Vijayalakshmi, Hyderabad District Col-

lector Anudeep Durishetti and Deputy Mayor Srilatha Shobhan Reddy accompanied him. The Minister appealed to the citizens not to have any misconceptions about a comprehensive house-to-house family survey and urged the citizens to furnish information to the enumerators without any apprehensions. He said that with the information provided by the government, the eligible beneficiaries will benefit from the government schemes in the future. "The data will remain confidential, and the goal is to address inequalities

HOLDING CASTE CENSUS A BOLD DECISION: CM

HANS NEWS SERVICE HYDERABAD

HIGHLIGHTING the possible political risks involved in conducting the caste census, Chief Minister A Revanth Reddy described the exercise to be a bold decision by the government. Addressing the gathering at State Level Consultations on Caste Census at Gandhi Ideology Centre in Bowenpally, Revanth Reddy described the event as a clear commitment of the State government's seriousness of conducting the exercise. Describing the State as 'rising Telangana', the Chief Minister affirmed that once the survey is completed, the Backward Classes would be provided with their rightful quota. While reiterating his demand that el-

ements of Telangana's Caste Census be included in the national census of 2025, he said that a resolution was being passed in this endeavour on the occasion. Expressing his gratitude to Rahul Gandhi for his participation in the event, the Chief Minister said that it was the national leader's forte to transform his words into actions. Revanth Reddy, emphasising how the present government was committed to doing social justice, said less than 10 per cent upper castes were selected for the Group-1 Mains. "In the recently held Group-1 exams, a total of 31,383 aspirants were selected for the Mains. From amongst them, 57.11 per cent were OBCs, 15.3 per cent were SCs and 8.8 per cent were STs," he said.

Caste survey to uplift marginalised communities, says Deputy CM

HANS NEWS SERVICE HYDERABAD

STATE Deputy Chief Minister Bhatti Vikramarka Mallu has said that the socio-economic, education, political, and caste census has been launched in the State aiming to uplift the marginalised communities in the State. The data collected through the census would be used to correct the mistakes common in the delivery of the questions related to caste, welfare and development programmes to various communities, land ownership, munities, mainly the back-ward sections. They also inquire about govern-

ment schemes benefited from, such as reservations for SCs, STs, BCs, and EBCs, as well as details about migration and political involvement. Mayor Gadwal Vijayalakshmi asked the residential welfare associations, NGOs, public representatives and people from all walks of life to contribute to the survey.



Photo: Adula Krishna

furnish authentic data, Bhatti said that it had nothing to do with the removal of ration cards and stoppage of the welfare scheme benefits to anyone from the survey. Arrangements have been made to complete the survey before the deadline. One enumerator has been appointed for every 150 people, and one supervisor would monitor 10 enumerators. A total of 94,750 enumerators have been deployed across the State. In the

'Caste census to draw quota system based on population'

Hans India

HANS NEWS SERVICE HYDERABAD

THE state government had taken up the caste census for two reasons. One since the party leader Rahul Gandhi had promised during the election campaign, and the second because the previous BRS government did not make the socio-economic survey public.

Speaking to Hans India on the eve of his birthday on Thursday evening, Chief Minister A Revanth Reddy said that even he could not gain access to the data or the details of the survey report. Hence, the CM said the government had now taken up a 360-degree survey which has become a role model for the entire country when the national-level caste census programme is taken up.

It has been designed keeping in mind the idea of Rahul Gandhi to get exact data on caste, creed, religion, employment, education, socio-economic conditions, and other details so that the quota system based



Caste census foundation for progress: Rahul

Says Telangana will become model of caste census for other States

HANS NEWS SERVICE HYDERABAD

CONGRESS leader Rahul Gandhi on Tuesday said he is fully committed to ensuring caste census in Telangana and in making the state a model for caste census in the country.

Addressing a Telangana Pradesh Congress Committee meeting here, ahead of the commencement of caste survey from November 6 by the state government, Rahul Gandhi said caste census is the first process to be taken up to assess the extent and nature of discrimination.

"So, I am fully committed to ensuring not only the caste census happens in Telan-

gana, but that Telangana becomes a model for the caste census in the country."

Taking potshots at Prime Minister Narendra Modi, he said he wondered why the PM has not publicly said that he wanted to challenge the idea of discrimination in India. "Why is the PM scared of asking how many Dalits, OBCs, and Adivasis are there in corporates, judiciary, media," he asked. He said he has committed in Parliament on behalf of Congress to conduct a national caste census.

He said the caste census would be a framework of progress and development of the entire nation.

Continued on Page 7



The Vanguard of Oversight – Cabinet Sub-Committee

Strategic Oversight

A high-powered committee was formed on October 19, 2024, to oversee the SEEPC survey process comprehensively. Ensured rigorous monitoring and guidance throughout all survey phases.

The Leadership

Chaired by Shri N. Uttam Kumar Reddy, Minister for Irrigation & CAD and Civil Supplies. Provided strong and focused leadership driving effective oversight.

Multi-Sectoral Representation

Included key ministers from Health, IT, Transport (BC Welfare), and Panchayat Raj. Promoted a holistic, cross-departmental approach to governance and decision-making.

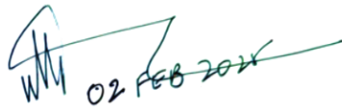
The Resolution

After thorough review of Phase-1 results, the committee recommended the report to the Council of Ministers on February 2, 2025. Paved the way for strategic executive action based on informed insights.

RESOLUTION

The Socio Economic, Educational, Employment, Political and Caste Survey Report submitted by Planning Department, Government of Telangana, is noted.

Cabinet Sub-Committee recommends the Report to be submitted to Council of Ministers for further necessary action.



N. Uttam Kumar Reddy,
Hon'ble Minister for Irrigation & CAD;
Food & Civil Supplies and
Chairman, Cabinet Sub Committee



Planning Department submitted the results of the Survey to the Committee Chairperson, the Hon'ble Minister of Irrigation and CAD, Food and Civil Supplies Shri N. Uttam Kumar Reddy, other committee members.

Validating the Science – Independent Expert Working Group (IEWG)



The Scientific Seal

IEWG established under G.O.Ms.No.6 on March 12, 2025, to ensure data credibility.

Tasked with validating the survey's methodology and scientific integrity.



Elite Intellect

Chaired by Justice (Retd.) Sudarshan Reddy.

Included prominent economists and social activists like Thomas Piketty and Jean Dreze.



The Verdict & Deliverable

IEWG confirmed the survey's "robustness and scientific rigor."
Submitted a detailed analysis to the government on July 19, 2025, affirming Telangana's survey as the most scientifically sound nationally.

The Stalwarts – Members of the Independent Expert Working Group (IEWG)

- Justice (Retd.) Sudershan Reddy, Chairman
- Prof. Kancha Ilaiah, Vice Chairman
- Sri Praveen Chakravarty, Member Convenor
- Prof. Shantha Sinha, Member
- Prof. Himanshu, Member
- Dr. Sukhadeo Thorat, Member
- Sri Nikhil Dey, Member
- Prof. Bhangya Bhukya, Member
- Prof. Purushotham Reddy, Member
- Prof. Jean Dreze, Special Invitee
- Prof. Thomas Piketty, Special Invitee

IEWG Team appreciated the Caste Survey

However, to objectively assess relative backwardness, the data needed to be **scientifically** filtered and interpreted. From the 75 fields, 42 parameters were selected based on a rigorous evaluation of their statistical significance and sociological relevance. Only those indicators that clearly revealed structural inequalities or consistently differentiated communities in meaningful ways were included. The detailed statistical methodology adopted to test for statistical significance of each parameter is outlined in APPENDIX 7: STATISTICAL METHODOLOGY TO DETERMINE SIGNIFICANCE OF PARAMETERS

The main conceptual finding of this report is that “every backward caste is not equally backward”. While this may seem obvious, for the first time, there is **empirical** evidence and a numerical measure for this truism. Thus, if 135 castes fall below the state average, the corollary is that there are 107 castes that are deemed less backward than the state average. These 107 less backward castes

But it must be emphasised that it is neither the mandate nor the intent of this committee to propose or even suggest which castes should be included in the BC/SC/ST/General category. That exercise is the sole discretion of bodies such as the Backward Class Commission and other such statutory bodies. This is merely an **empirical** and a scientific analysis of the hierarchy of backwardness of castes based on the SEEEPC survey.

THE HINDU
Telangana

Expert Group on caste survey to submit its report to govt. in 10 days

Forty-two parameters were used to analyse the caste census report, which collected data from over 3.55 crore residents of Telangana who responded to 74 questions

The Hindu Bureau
HYDERABAD

The Independent Expert Working Group constituted by the Telangana government to analyse and interpret data from the Social, Educational, Employment, Economic, and Caste Survey (SEEEPCS) 2024, commonly known as the caste survey, will submit its 300-page report to the State government in a week or 10 days after incorporating a few suggestions made by the members at the last meeting held here on Wednesday.

Speaking to the media at the Dr. Marri Chenna Reddy HRD Institute of Telangana, chairman of the



Praveen Chakravarty

group and former Supreme Court Justice B. Sudarshan Reddy said that the group had conducted its last meeting at the institute and deliberated on the report to be presented to the State government.

Member-Convenor of the Expert Group, Praveen Chakravarty, said that they had given rankings to

a total of 242 caste groups from the Backward Classes (BC) by developing an objective statistical method called the ‘Composite Backwardness Index (CBI)’ to scientifically quantify the backwardness of castes.

Mr. Praveen Chakravarty, one of the architects of the CBI, said that it was a first-of-its-kind metric designed and used globally to objectively assess social and economic disparities. They had used 42 parameters to analyse the caste census report, which collected data from over 3.55 crore residents of Telangana who responded to 74 questions covering aspects ranging from education and income to housing, landholding, and expe-

periences of discrimination.

Justice Sudarshan Reddy said that the State government would decide whether to put the report in the public domain or not once it was submitted. Vice-Chairman of the Group, Prof. Kancha Ilaiah, said that no other State or the Union government had conducted a survey like the SEEEPCS in India since its independence.

This 11-member Independent Expert Group members Prof. Shantha Sinha, Dr. Sukhadeo Thorat, Prof. Bhangya Bhukya, Prof. Purushotham Reddy, State Nodal Officer for the SEEEPCS Survey and Group secretary Anudeep Durishetty were present during the press briefing.

Expert group submits report on caste survey to Telangana govt

Roushan Ali / TNN / Jul 20, 2025, 10:02 IST

Share Print AA Follow Us

An expert group led by Justice Sudarshan Reddy has submitted its report on the caste survey to the Telangana government. The report terms the survey scientific and reliable. Chief Minister Revanth Reddy received the report, which will be discussed in ... [Read More](#)



HYDERABAD: The Independent Expert Working Group (IEWG), led by former Supreme Court judge B Sudarshan Reddy, submitted its 300-page report to the state govt on Saturday. The group termed the methodology of the Congress govt-conducted Socio-Economic, Education, Employment,

Political and Caste (SEEEPC) survey as scientific, authentic, and reliable, stating that it will become a role model for the nation.

Chief minister A Revanth Reddy, along with deputy CM Bhatti Vikramarka, some ministers received the report at a programme at MCRHRD Institute. The CM said the report would be placed in the next cabinet meeting, likely to be held on July 25, for discussion.

The 300-page report assumes significance as the govt is set to earmark 42%

Telangana Caste Survey. Expert Working Group submits findings

The findings of the survey will help the government in formulating policies and streamlining and bettering existing ones to better enable social justice, social empowerment and social uplift

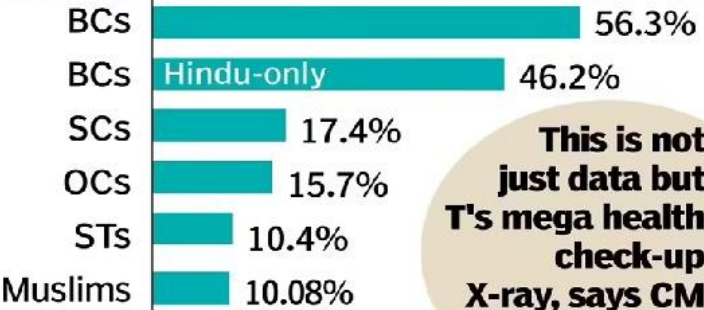
By BL Hyderabad Bureau
Updated - July 19, 2025 at 08:59 PM. | Hyderabad

'MODEL FOR ENTIRE COUNTRY'

- SEEEPC survey held in two phases
- Employed 1,03,889 enumerators & supervisors
- IEWG terms methodology of survey as scientific, authentic, & reliable

IN NUMBERS

- No of households: 3,55,50,759
- Total population 3.55 cr



This is not just data but T's mega health check-up X-ray, says CM

IEWG Team Submitting the Report



IEWG Team Meeting at MCRHRD Institute



The Gigantic Scale – Numbers that Define a State

Data Magnitude

A staggering **80 crore** data points captured across **10 crore** pages of information, highlighting the extensive depth of data collection.

Household Reach

Successfully surveyed over **1.12 crore** households, ensuring comprehensive ground-level engagement.

Population Coverage

Total population captured stands at approximately **3.56 crore** people, reflecting wide demographic representation.

Excellence in Execution

Achieved an impressive overall survey coverage of **97.10%**, demonstrating high accuracy and thoroughness in data collection efforts.

Data to Destiny – Landmark Legislative Wins

The Outcome: Government Empowered by Survey Results

- Introduction of two historic bills based on the survey findings:
- Bills ensure 42% reservation in educational institutions and state employment for BC Community.
- Extension of 42% reservation to local self-government bodies, both rural and urban.
- Bills submitted for the Hon'ble President's assent, marking a pivotal step towards social justice in Telangana.

The Demographic Portrait of a State

Population Overview

Total Population of the State approximately **3.55 crore** citizens indicating a large and diverse community

Caste Composition

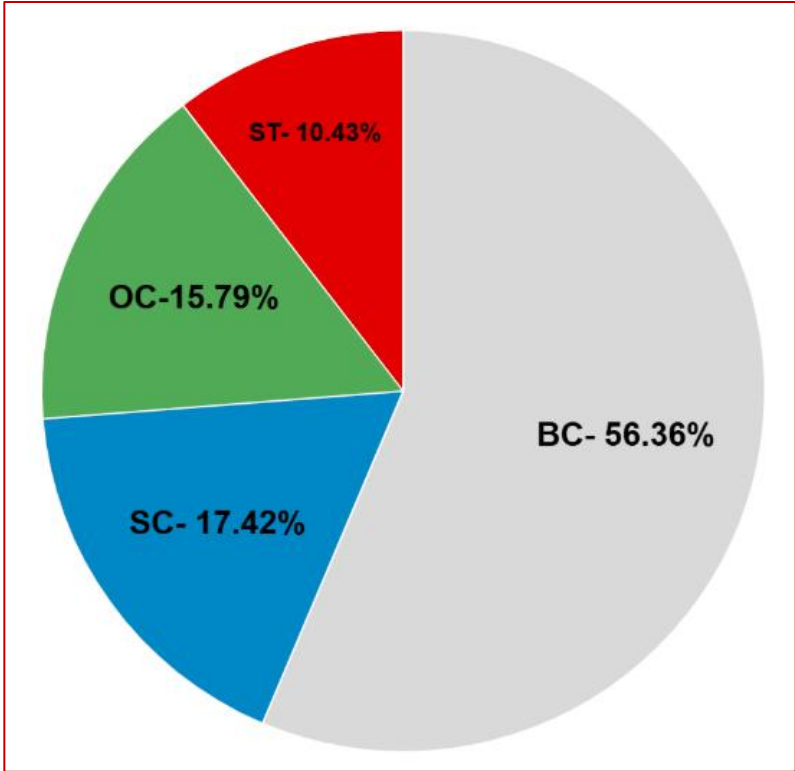
Backward Classes (BC) form the majority at **56.36%**, followed by **Scheduled Castes (SC) at 17.42%** and **Scheduled Tribes (ST) at 10.43%**. **Other Classes (OC)** represent **15.79%** of the population, reflecting a varied social structure.

Gender Distribution

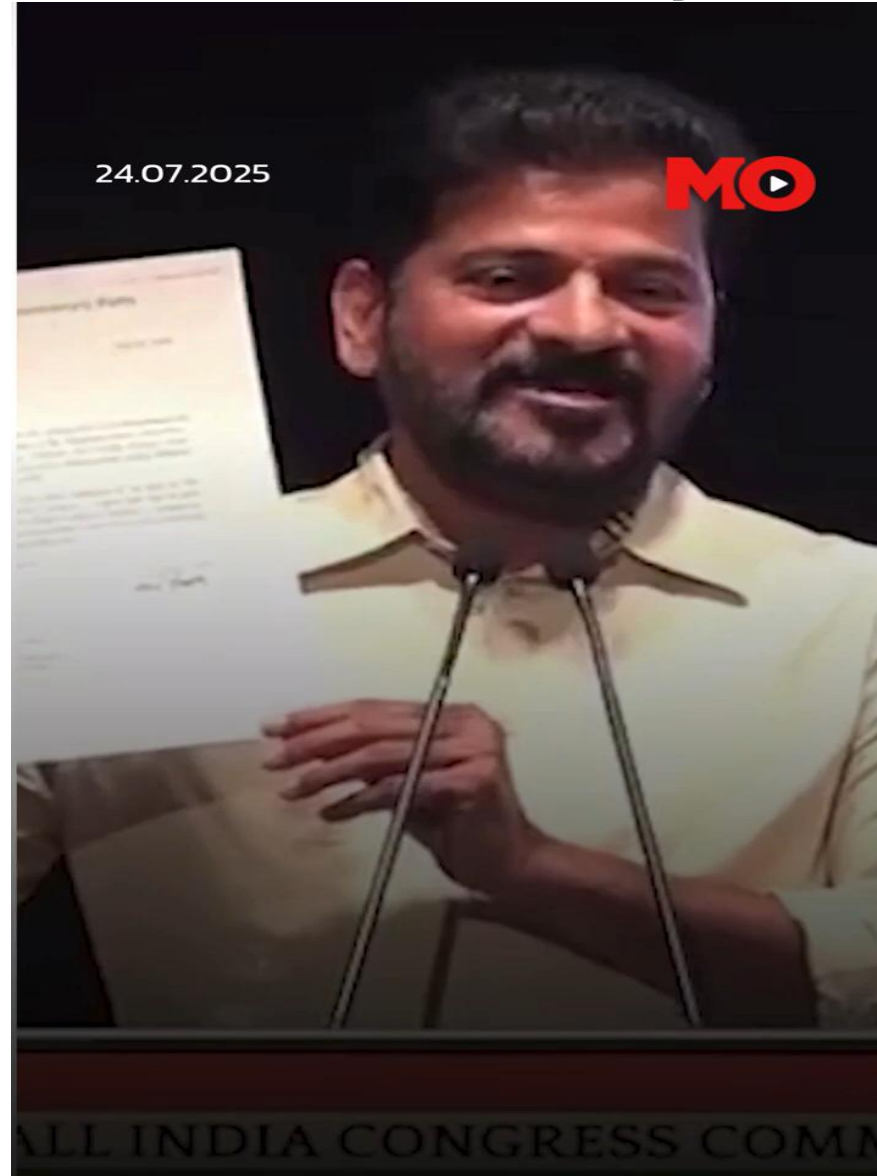
The gender balance is almost equal with **males at 50.52%** and **females** close behind at **49.44%**. Third gender accounts for a small but recognized **0.04%**, highlighting inclusion efforts.

Category-wise Population and Percentages

S.No	SC	ST	BC	OC	Grand Total
1	2	3	4	5	6 (6 = 2+3+4+5)
Count	61,91,294	37,08,408	2,00,37,668	56,13,389	3,55,50,759
%	17.42%	10.43%	56.36%	15.79%	100.00%



Hon'ble Chief Minister showing appreciation letter from Ms. Sonia Gandhiji



A Call to Action – Your Legacy as Officers

The Lesson

- Demonstrated power of coordination and commitment through capturing 80 crore data points in just 50 days by 1 lakh people.
- Proof that seemingly impossible tasks can be achieved with collective effort and dedication.

The Spirit

- Emphasizes the unity from the highest leadership (Governor and CM) to ground-level enumerators.
- Highlights the survey as a symbol of collaboration rather than just data collection

Your Turn

- As Group-I Officers, you are the architects of such future miracles, Lead with Data, Empathy, and Administrative Courage.
- Leadership with a blend of data-driven decision-making, empathy, and administrative courage.

The Legacy (Your Mantra as Officers)

- **The Truth**

This presentation wasn't about a survey; it was about **you**.

- **The Administrative Creed**

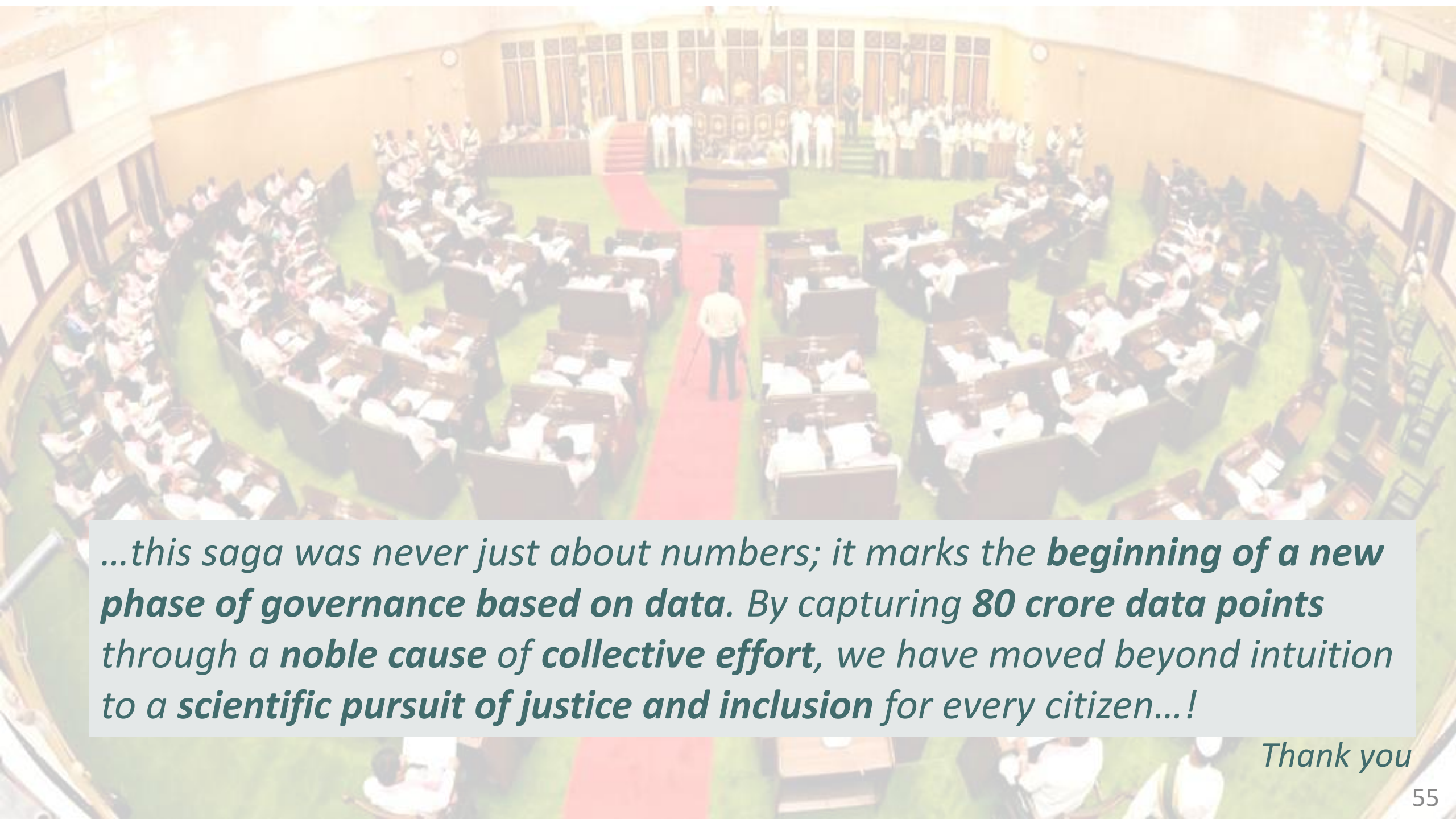
In your career, you cannot say "No." You cannot say "I have no experience".

- **The Strategy**

Use backward calculation. Compress the process. **Change your style to fit the need**, because the need will never change to fit your style.

- **The Final Word**

If there is a will, there is always a way. Get ready for your own gigantic challenge.



*...this saga was never just about numbers; it marks the **beginning of a new phase of governance based on data.** By capturing **80 crore data points** through a **noble cause of collective effort**, we have moved beyond intuition to a **scientific pursuit of justice and inclusion** for every citizen...!*

Thank you